

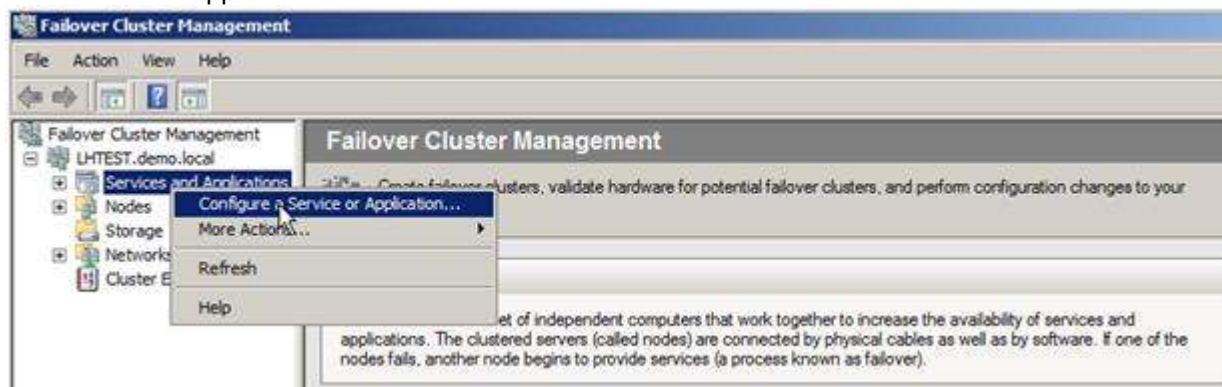
# Priscila Silva

Infra-estrutura Microsoft

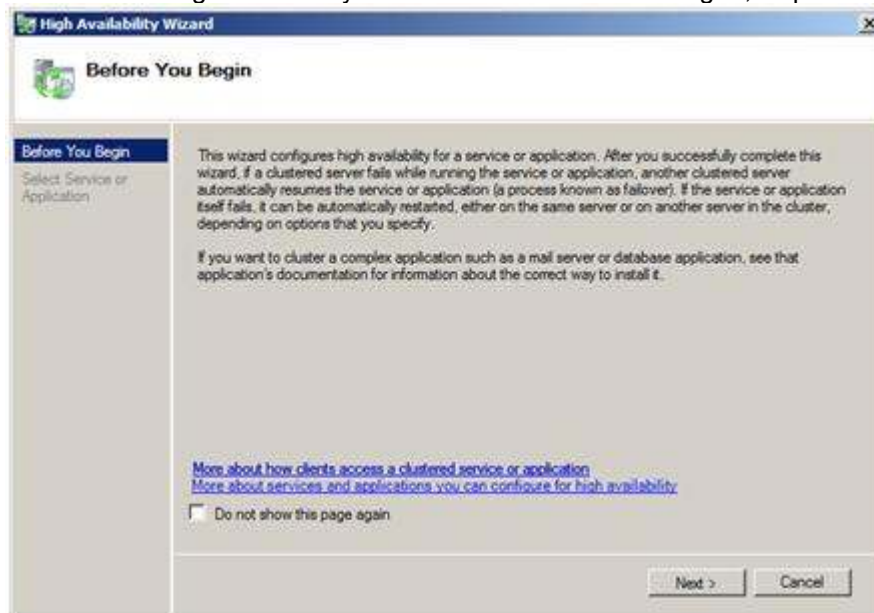
## Instalação e configuração Failover Clustering (Windows Server 2008) - parte III

Nesta última parte dos artigos focados na funcionalidade **Failover Clustering**, iremos mostrar o procedimento passo-a-passo da instalação do MSDTC (Distributed Transaction Coordinator) como recurso no cluster.

- 1 Clique "Failover Cluster Management" > "CLUSTER.DOMAIN" > "Services and Applications" > "Configure a Service or Application".



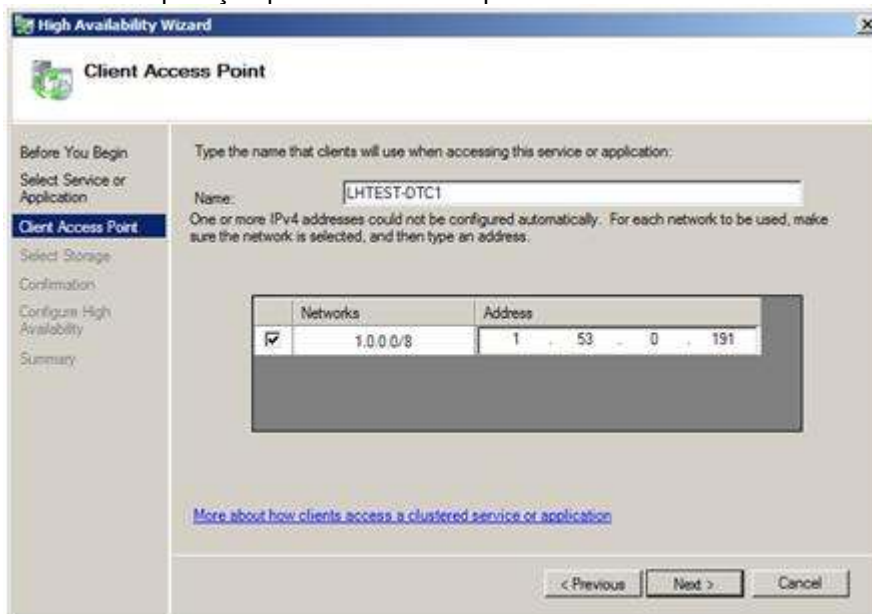
- 2 Inicialará o "High Availability Wizard". Em "Before You Begin", clique "Next".



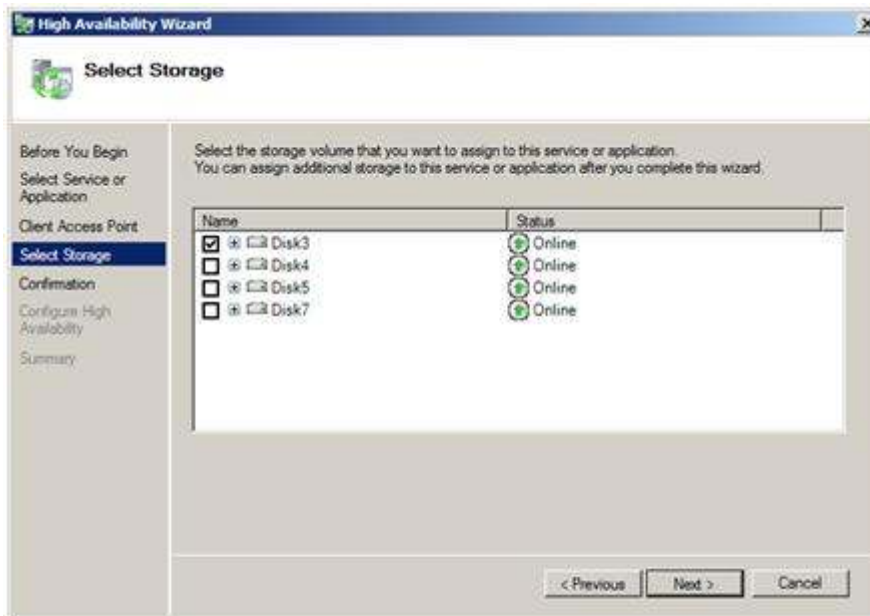
- 3 Selecione "Distributed Transaction Coordinator (DTC)" e clique "Next".



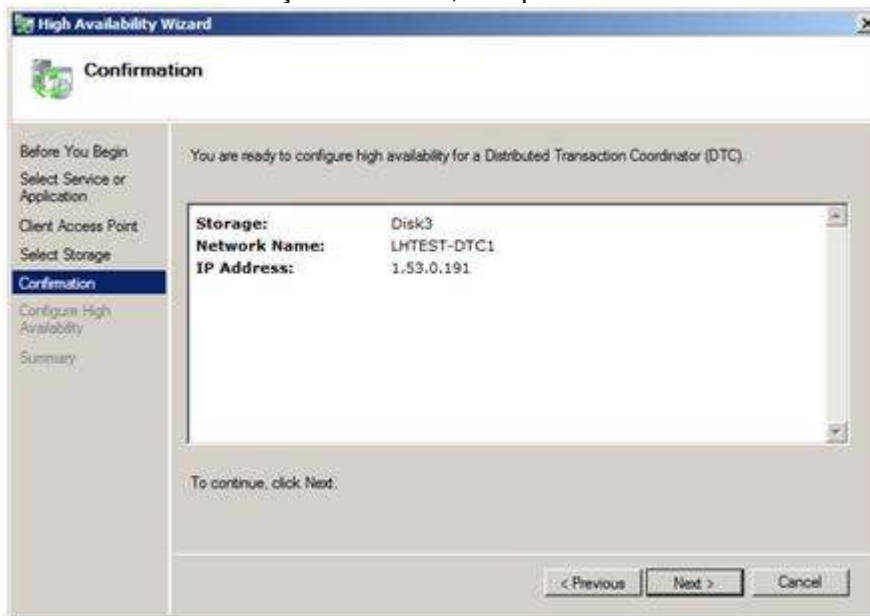
4 Em "Client Access Point", digite o nome (por exemplo, "MSDTC") e endereço IP através dos quais será acessada a aplicação pelos clientes. Clique "Next".



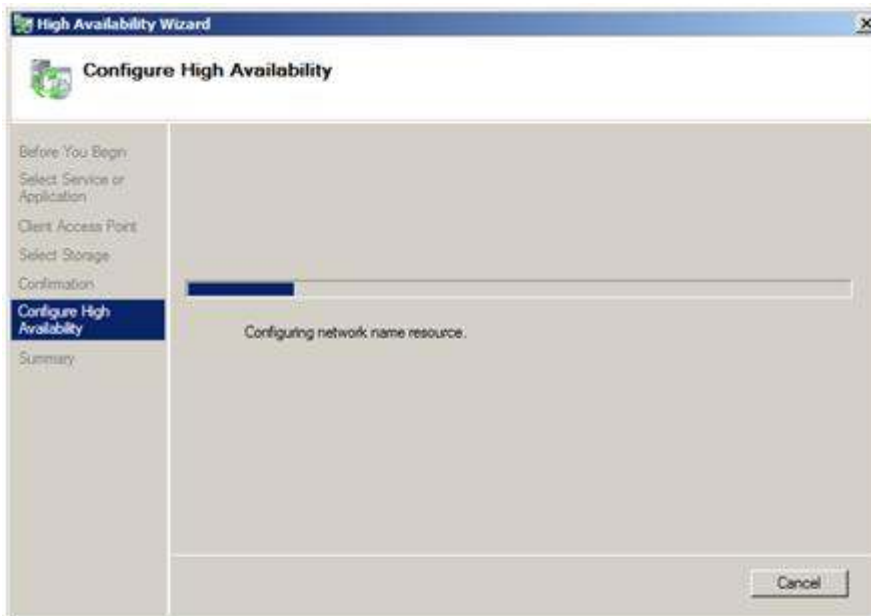
5 Selecione o local para armazenar o diretório "MSDTC Log". Clique "Next".



6 Confirme as informações inseridas, e clique "Next".



7 Aguarde enquanto é executado o processo de configuração.



8 Ao término do assistente, é gerado um relatório de sumário com as informações. Clique "View Report".

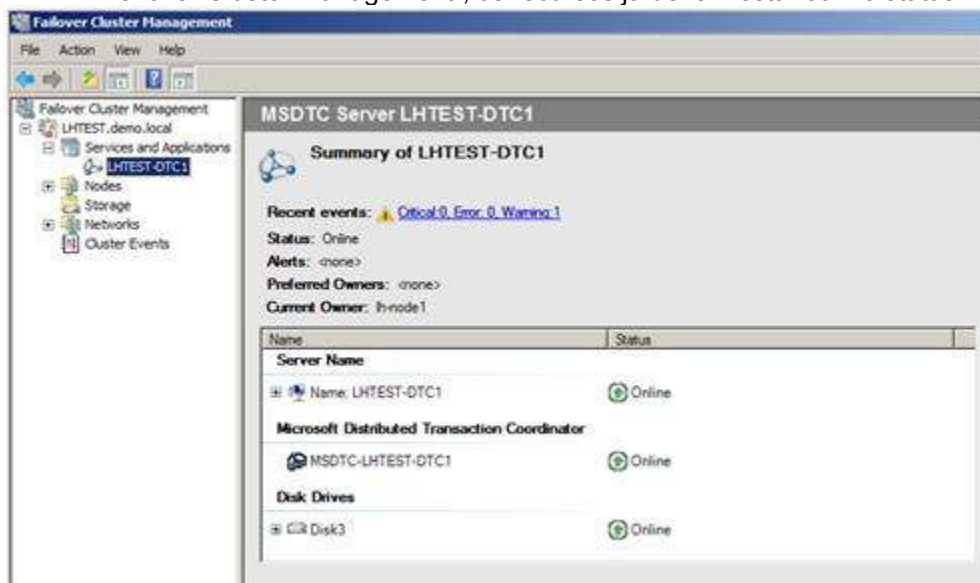


9 Clique "View Report" e um relatório será exibido no Internet Explorer.

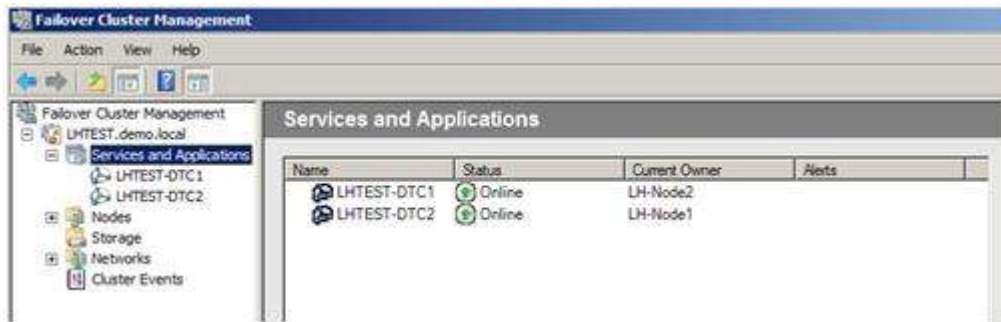


10 O relatório está armazenado com os outros relatórios de configuração, em `%windir%\cluster\reports`.

11 Em "Failover Cluster Management", os recursos já devem estar com o status "Online".



Caso seja necessário configurar outro(s) serviço(s) DTC para alta disponibilidade, é possível inseri-lo(s) no grupo de recursos do(s) outro(s) nó(s) do cluster. Ao término deste processo, o resultado é conforme a figura abaixo.



Para cada instância em cluster do MSDTC, uma pasta chamada "MSDTC" é criada no recurso de disco físico localizado no mesmo grupo do recurso MSDTC. Este é o local no qual o arquivo de log é armazenado para aquela instância específica do MSDTC.

**Atenção:** se o status do recurso do MSDTC constar como "Failed", verifique no Event Viewer se há o seguinte erro.

#### Event ID: 1194

The computer account for Cluster resource 'MSDTC\_NAME' in domain could not be created for the following reason: Unable to create computer account.

Neste caso, é necessário dar permissões para criar "computer objects" à conta associada ao cluster name (CLUSTER\_NAME\$), conforme procedimento abaixo.

To verify that the Cluster service account has the Add Workstations to a Domain user right:

1. Log on to the domain controller on which the Cluster service account is stored.
2. Start the Domain Controller Security Policy program from Administrative Tools.
3. Click to expand Local Policies, and then click to expand User Rights Assignments.
4. Double-click Add Workstations to a Domain and note the accounts that are listed.
5. The Authenticated Users group (the default group) should be listed. If it is not listed, you must grant this user right to either the Cluster service account or a group that contains the Cluster service account on the domain controllers.

**Note:** You must grant this user right to the domain controllers because computer objects are created on the domain controllers.

6. If you explicitly add the Cluster service account to this user right, run `gpupdate` on the domain controller (or run `secdit` for Windows 2000) so that the new user right is replicated to all domain controllers.

7. Verify that the policy will not be overwritten by another policy.

Referência: [How to troubleshoot the Cluster service account when it modifies computer objects](#)

Posted: Wednesday, January 23, 2008 6:32 AM by [Priscila Silva](#)

Filed under: [Windows Server 2008](#), [Failover Clustering](#)

## Comments

No Comments

### Leave a Comment


Title *(required)*

re: Instalação e configuração Failover Clustering (Windows Server 2008) - pa

Name *(required)*

Your URL *(optional)*

Comments *(required)*



Enter Code Here: *Required*

Remember Me?

**Comment Notification**

If you would like to receive an email when updates are made to this post, please register [here](#)

Subscribe to this post's comments using [RSS](#)